



Primary Transportation Services

FIXED ROUTE SERVICE

\$4,163,420 (estimated cost)

Fixed Route service is provided to the general public on routes circulating throughout the city at half-hour intervals during peak times. Routes serve all major retail, medical, educational and employment destinations. All buses are fully accessible to persons with disabilities. The service operates from Monday through Saturday, and is subsidized through FTA and TxDOT Section 5307 formula-based grant funding.



CITIAccess PARATRANSIT SERVICE

\$3,211,972 (estimated cost)

The ADA Paratransit service caters to certified elderly and disabled passengers who cannot navigate the Fixed Route bus system. This demand-response service allows passengers to receive curb-to-curb transportation, and complements the hours of the Fixed Route service. Like the route system, CitiAccess is subsidized with FTA and TxDOT Section 5307 formula grant funding. Citibus also serves as a regional contractor for the Health and Human Services Commission's (HHSC) Medical Transportation Program. This service is available to Medicaid recipients who require transportation to the doctor, dentist or pharmacy. The service is fully subsidized by HHSC.



TEXAS TECH UNIVERSITY SERVICE

\$2,645,222 (estimated cost)

Under an agreement with Texas Tech University Student Government Association, Citibus provides campus transportation through three on-campus routes and five off-campus routes. These services are provided through subsidies derived from the Student Transportation Fee (on-campus) and apartment complexes (off-campus). Texas Tech University campus has been served with public transportation since the fall semester of 1968.



NITERIDE EVENING SERVICE

\$169,051 (estimated cost)

NiteRide was established for passengers seeking transportation at the conclusion of the day's Fixed Route and ADA Paratransit services. Registered passengers can utilize the service from Monday through Saturday evenings until 10:30pm. Because the parameters of the service exceed the ADA requirements, NiteRide is subsidized with FTA Section 5317 New Freedom funds, and matched with local City funding.





Upcoming Capital Projects

HYBRID-ELECTRIC BUS PURCHASE

As a replacement to buses that have surpassed their designated useful life, the agency will purchase two 35' hybrid-electric buses. It is estimated that these energy efficient buses will save the agency 32-42% in annual fuel expenses and reduce carbon dioxide emissions by up to 50%. FTA Section 5309 Earmark funds will support this purchase, with matching funds derived from Transportation Development Credits. No local City funding will be utilized to subsidize this project.

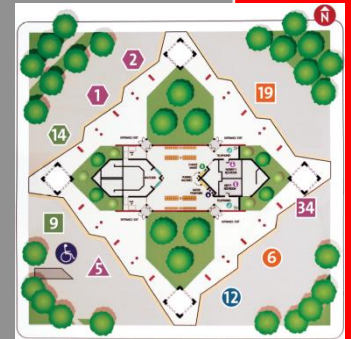
\$1,113,622



DOWNTOWN TRANSFER PLAZA RENOVATION

With Phases 1 and 2 set to begin in May 2011, Citibus continues to pursue funding for Phases 3 and 4, which entails lobby renovations, a business center, storage expansion (Phase 3) and site repair and modifications (Phase 4). These projects will enhance the operation of the Downtown Transfer Plaza, as well as the comfort and convenience of Citibus and Greyhound passengers. Citibus staff has sought discretionary FTA Section 5311 Intercity Bus funding with matching funds derived from Transportation Development Credits. It is anticipated that no local funds will be utilized.

\$1,169,462



STAFF VEHICLE REPLACEMENT

As a means for its Supervisors to ensure quality control, Citibus will replace six staff vehicles in fiscal year 2011. This includes the purchase of four ramp-equipped minivans and two sedans to replace vehicles that have surpassed their designated useful life. This purchase will be subsidized by \$144,000 in FTA Section 5307 formula-based funds, with \$36,000 in local match funding.

\$180,000 (estimated)



ADMINISTRATIVE/MAINTENANCE EXPANSION

In the coming years, Citibus will look to expand its administrative/maintenance facility through construction, adjacent land acquisition, and street closure. The expansion will include new offices for administrative, clerical and operations personnel, as well as a modern maintenance facility with bi-level parking for buses, visitors and personnel. The agency has already attained schematic drawings of the proposed expansion, and the project is likely to commence in the next 5-10 years after Section 5309 Earmark funding can be secured. Citibus will pursue Transportation Development Credits so that no local City funds will be utilized.

\$25,000,000 (estimated)

